



MINISTERIO
DE TRANSPORTES, MOVILIDAD
Y AGENDA URBANA



Air passenger protection experience with measures aimed at stemming the spread of COVID-19 from an AESA perspective.

Dr. F. Rios Tejada
Chief Medical Assessor
EASA Workshop 22 Sept, 2020

1. Introduction & Background
2. Principles
3. World COVID19 Cases
4. Public Health Corridors (PHC)
5. Matrix of Measures
6. Air Travel: Passengers Travel Phase
7. Actions in place
8. Aviation Health Safety Package
9. Steps
10. Mitigation measures
11. Rating scales
12. Survey
13. Conclusions



Background	Air transport has always been an industry based on the interdependence of all its parts, the COVID-19 crisis devastated all stakeholders—from aircraft manufacturers and travel agents to retailers in airports—and resulted in mass furloughs and layoffs, business shutdowns, bankruptcies and other instances of economic destitution.
Actions	Share with the aviation community the latest aviation relevant information on the outbreak and its impact on aviation operations.
	Coordinate efforts among major Agencies and Organizations
	Propose COVID-19 Strategic Response and Preparedness Plan: National & Global response
	Up to date epidemiological analysis & risk assessment
	Communications and society engagement + law enforcement
Objective	Return to Normal Operations



Measures should be **outcome based**, & supported by **scientific evidence**

Measures should be aimed at **minimizing** the **risk** of **transmission** at airports and on board the aircraft

Collaboration is vital to ensure **harmonized** measures:

- Among governments, to implement internationally consistent, mutually accepted measures that are essential to restoring air connectivity and passenger confidence in air travel.
- Between governments and industry & operators, particularly to ensure the practicable development and implementation of operational measures.

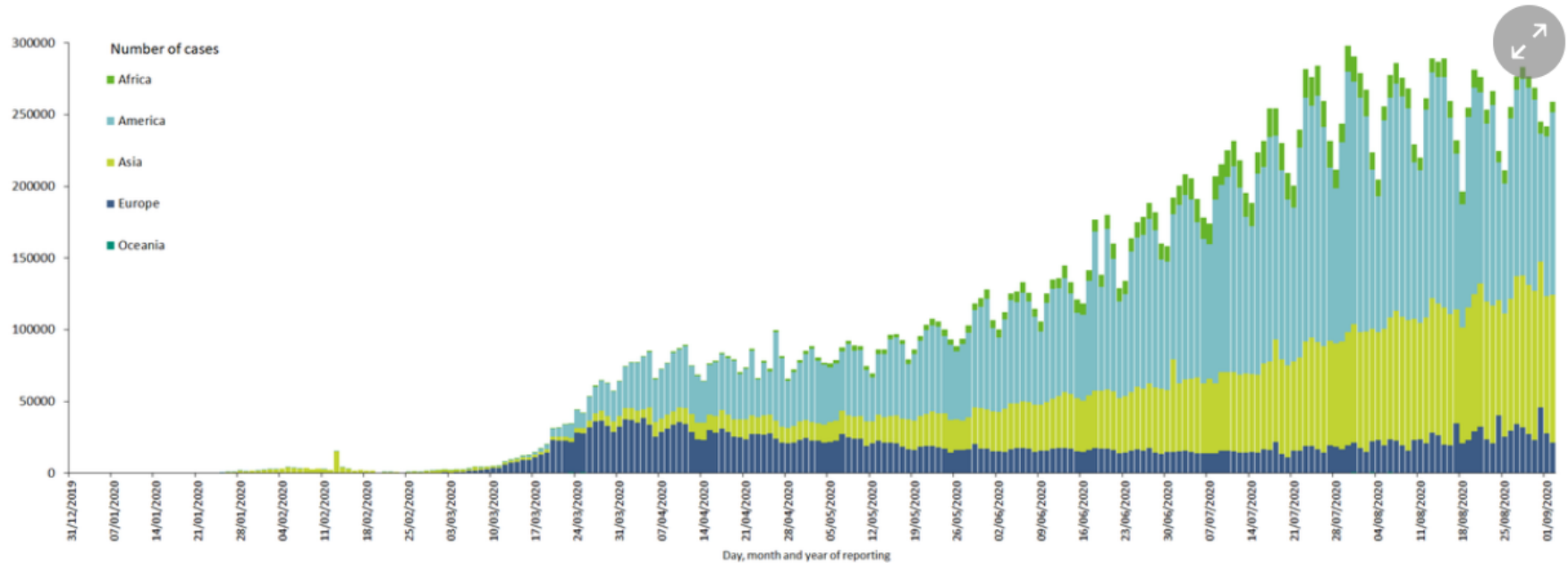
Roles and responsibilities of governments, airlines, airports and other operational stakeholders should be **respected in implementing the response to COVID19**.

Active Role of National & International organizations: ICAO/CAPSCA, EASA, IATA, ACI, CDC, ECDC, DG Santé, EACCC (Eurocontrol).

Source: modified from ACI-IATA Report

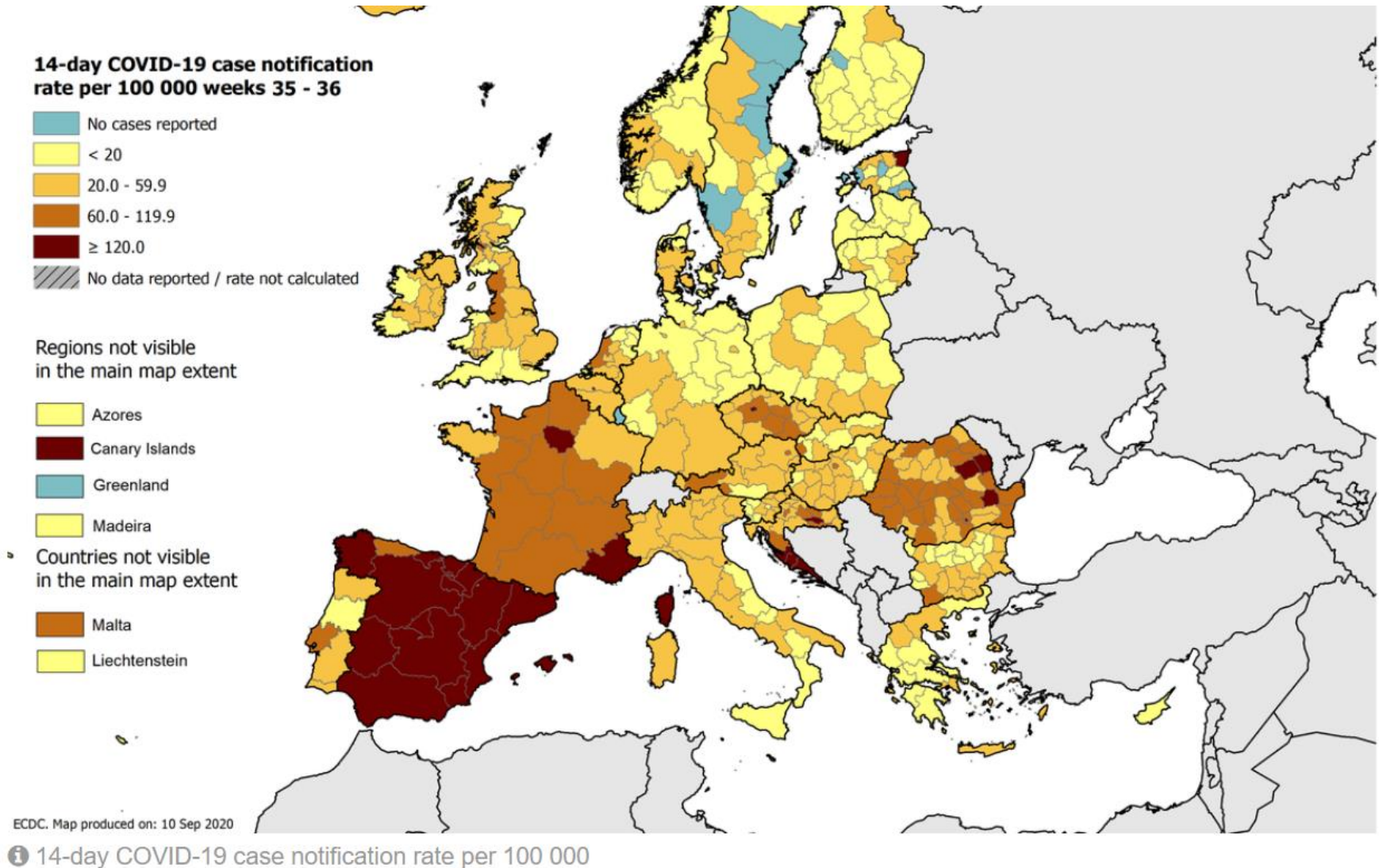


Distribution of COVID-19 cases worldwide, as of 2 September 2020



Source: ECDC up to date





Source: ECDC up to date 10/09/2020



NO COUNTRY
LEFT BEHIND

Elements of the PHC

• Crew



- ✓ Flight crew
- ✓ Cabin crew
- ✓ Other crew
- ✓ Layover
 - Airport-hotel-airport transportation
 - Hotel accommodations

• Airport



- ✓ Disembarking support equipment
- ✓ Vehicles to transport crew from terminal building to aircraft
- ✓ Terminal building
 - Security access
 - Security Screening
 - Outbound/inbound border control
 - Baggage claim
 - Arriving passenger pick-up

• Cargo



- ✓ Airport handling
- ✓ Loading and unloading

• Passenger



- ✓ Pre-flight
- ✓ Departure to the airport
- ✓ Check-in
- ✓ Self-bag drop
- ✓ Boarding
- ✓ Inflight

• Aircraft



- ✓ Flight deck
- ✓ Passenger cabin
- ✓ Cargo compartment
- ✓ Maintenance

Source: ICAO & CAPSCA



MATRIX OF MEASURES

COVID-19 Aviation Health Safety Protocol

Guidance for the management of airline passengers in relation to the COVID-19 pandemic

Issue no: 1.1 Issue date: 21/05/2020

Measure	Airport operators	Aeroplane operators	Airport staff	Service providers	Crew members	Passengers
Physical distancing	Wherever possible	Wherever possible	Wherever possible	Wherever possible	Wherever possible	Wherever possible
Hand hygiene, respiratory etiquette	Yes	Yes	Yes	Yes	Yes	Yes
Face masks	Yes	Yes	Yes	Yes	Yes ²³	Yes
Health safety promotion material	Yes, in coordination, see annex 3		Yes, should adhere to the recommendations and disseminate the materials/information where required under their tasks	Yes, should adhere to the recommendations and disseminate the materials/information where required under their tasks	Yes, should adhere to the recommendations and disseminate the materials/information where required under their tasks	Yes – should read and adhere to the recommendations
Cleaning and Disinfection	Yes, see point 3.3	Yes ²⁴	N/A	Yes	N/A	N/A





MATRIX OF MEASURES



COVID-19 Aviation Health Safety Protocol

Guidance for the management of airline passengers in relation to the COVID-19 pandemic

Issue no: 1.1 Issue date: 21/05/2020

Measure	Airport operators	Aeroplane operators	Airport staff	Service providers	Crew members	Passengers
Health statement	Yes, in electronic format. Coordinate the format and assessment.		N/A	N/A	N/A	Yes – should complete the provided statement before the flight
Thermal screening	Yes, where required by national authorities	N/A	Possible, if airport operator did not implement a crew health monitoring programme	Possible, if the employer did not implement a crew health monitoring programme	Possible, if A/C operator did not implement a crew health monitoring programme	Yes, may be subjected where required by the airport in coordination with national authorities
Passenger assessment booths	Yes	N/A	N/A	N/A	N/A	Yes, doubtful cases should be further assessed.





MATRIX OF MEASURES



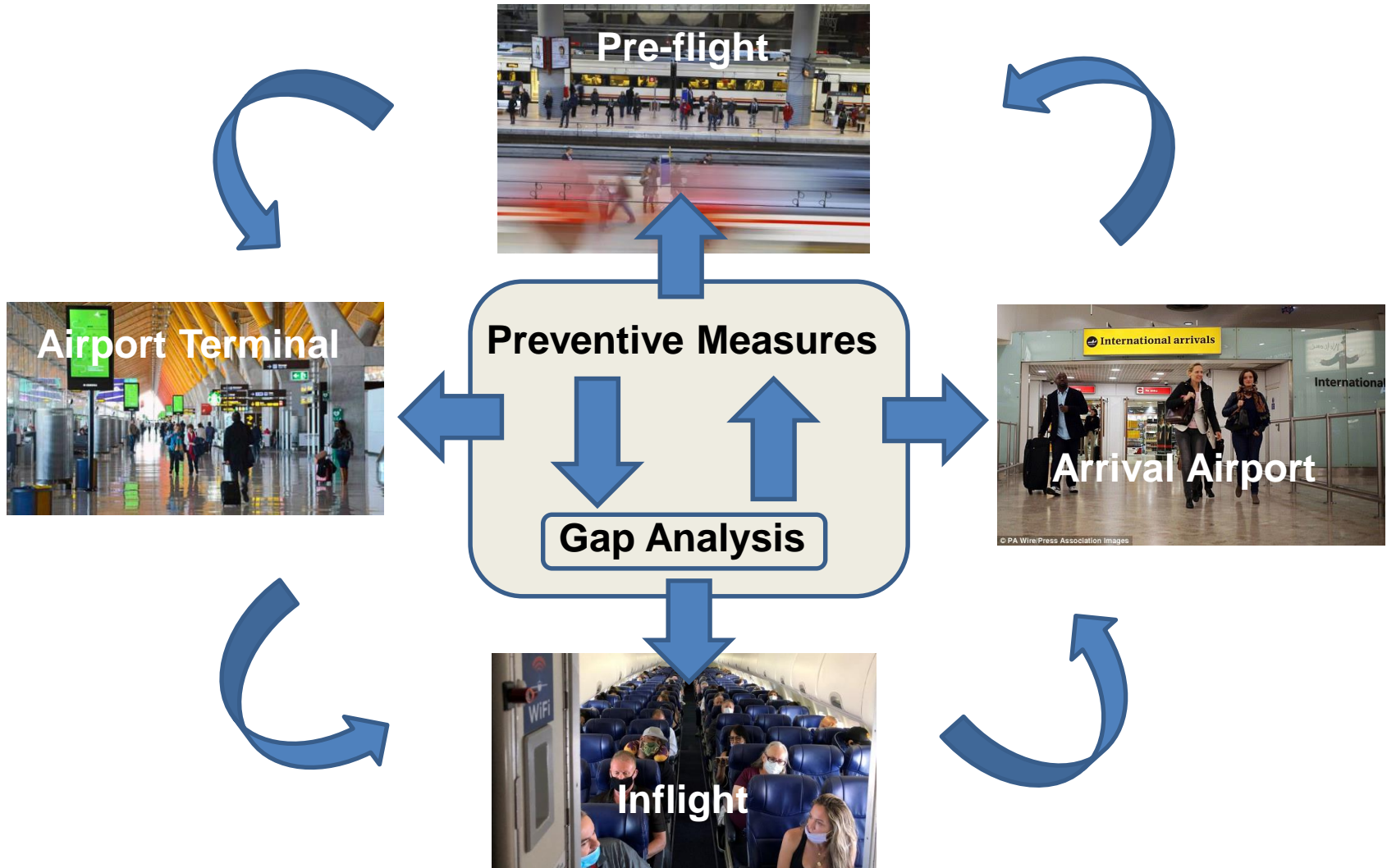
COVID-19 Aviation Health Safety Protocol

Guidance for the management of airline passengers in relation to the COVID-19 pandemic

Issue no: 1.1 Issue date: 21/05/2020

Measure	Airport operators	Aeroplane operators	Airport staff	Service providers	Crew members	Passengers
Reduced crew – passenger interaction	N/A	Yes. Essential services only. Avoid lavatory queuing. Designate crew lavatory	N/A	N/A	Yes	Yes – should adhere to the recommendations
Special disembarking procedure	Yes, in coordination with the local public health authorities.		Yes, where applicable enforce the instructions received from the public health authorities	Yes, where applicable enforce the instructions received from the public health authorities	Yes, enforce the instructions received from the public health authorities	Yes, follow the instructions of the crew and ground personnel

Passenger Travel Phase



Passenger Travel Phase

Pre-flight



Airport Terminal



Preventive Measures

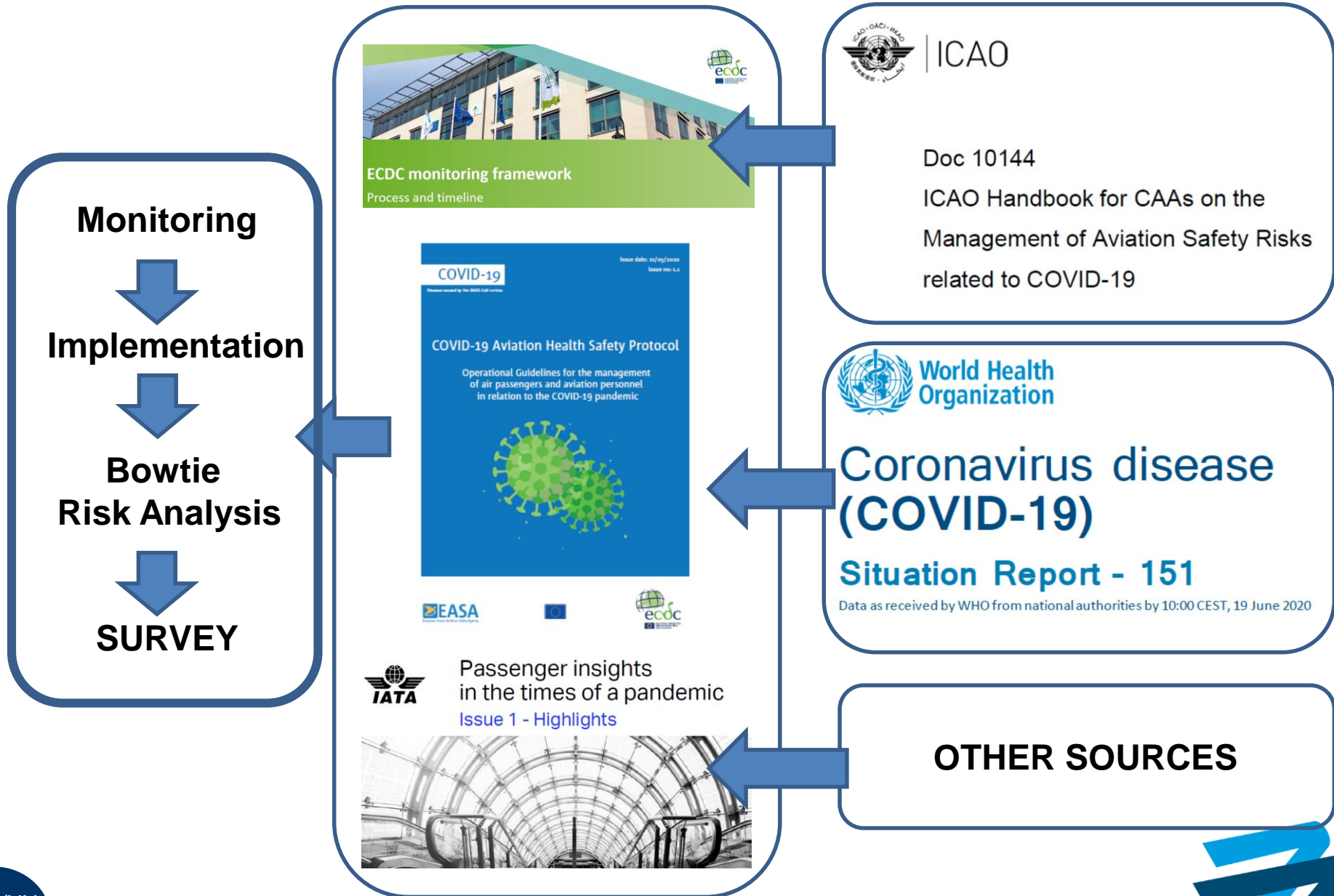
Gap Analysis

Arrival Airport



Inflight







SECRETARÍA DE ESTADO DE SANIDAD
DIRECCIÓN GENERAL DE SALUD PÚBLICA

Centro de Coordinación de Alertas y Emergencias Sanitarias

Main Airports & Ports



Local measures

Daily report

Re-enforcement

Prevention/advise



**Health Department
Autonomous Communities**



Implementation AHSP - Charter Signatories

- By end of July the Charter had grown to encompass 37% of EU traffic
 - 107 Airports
 - 38 Airlines
- Lufthansa Group latest to join the Charter
- Signatories provide a range of data on a Weekly basis to assist with monitoring of practical implementation and to identify improvements needed
- Further monitoring is planned through:
 - A passenger survey supported by airports (ACI) and airlines (IATA)
 - Bowtie feedback survey to charter signatories to support risk modelling



Implementation AHSP - Bowtie feedback survey to charter signatories to support risk modelling

- Bowtie model developed to understand the risk of CV-19 transmission in airports and on aircraft
 - Team from EASA, ECDC, AESA, Trafi, IATA, ACI
 - Mapped to the AHSP
- New Charter Surveys developed based on the Bowtie,
 - to understand implementation of “barriers” at airports and airlines
 - Passenger survey to be used as independent verification
- Dashboard developed to review the survey results

Airport: Departure

Land transportation to airport

Arrival to airport

Check in

Security

Common areas

Terminal conexions: transportation

Customs

Boarding Gate

Embarquing process

Airline: Aircraft

Stop over

Cockpit check

Cabin check

Seating

Safety procedures

Toilets

Meals

Airport: Arrival

Disembarquing process

Terminal conexions: transportation

Baggage pick up

Goods Declaration: Green and red line

Arrival gate

Land transportation from airport

Wear face mask	Social/physical distancing	Gloves	Hand Hygiene and respiratory etiquette	Face shields	Health safety promotion material	Posters and displayed advise
Health statement	Thermal screening	Passenger assessment booth	Disposable bags	Passenger flow management	Passenger locator card	Protective screens
Disposable bags	Passenger flow management	Passenger locator card	Protective screens	Cleaning and disinfection availability	Disinfection of surfaces and trays	Hydroalcoholic gel



RATING SCALE	1- Not implemented or poor
	2- Fair
	3- Good
	4- Very Good
	5- Excellent

RATING SCALE INCREASED RISK	0 – Excellent implementation of mitigation measures
	1 – Very good implementation of mitigation measures
	2 – Good implementation of mitigation measures
	3 -Fair implementation of mitigation measures
	4- Not implementation or Poor implementation of mitigation measures



Survey of EASA/ECDC Aviation Health Safety Protocol Implementation in Airlines**Implementation of Measures Relating to Passengers**

Q4. Are medical face masks* available to passengers at check-in positions?

*Medical face masks are defined in the COVID-19 Aviation Health Safety Protocol as complying with the requirements defined in European Standard EN 14683:2019+AC:2019.

- ☐ <10% of check-in positions
- ☐ 10-40%
- ☐ 40-60%
- ☐ 60-90%
- ☐ >90%

Implementation of Measures Relating to Airline Staff

Q15. Are aircrew provided with medical face masks and other PPE?

	<10%	10-40%	40-60%	60-90%	>90%
Medical Face masks	<input type="radio"/>	<input type="radio"/>	<input type="radio"/>	<input type="radio"/>	<input type="radio"/>
Medical Face shields	<input type="radio"/>	<input type="radio"/>	<input type="radio"/>	<input type="radio"/>	<input type="radio"/>
Disposable overalls or daily change of uniform	<input type="radio"/>	<input type="radio"/>	<input type="radio"/>	<input type="radio"/>	<input type="radio"/>



Survey of EASA/ECDC Aviation Health Safety Protocol Implementation at Airports**Management of Aviation Health Safety Protocol by Airports**

Q1. Has the airport operator appointed a coordinator to ensure a uniform application of health preventative measures by all those responsible for providing services at the airport?

Example activities would include:

- Communication/ coordination plan
- Designated aviation personnel to communicate/ coordinate

- ☐ Yes
☐ No

Implementation of Measures Relating to Passengers

Q12. Does the airport have separate interview booths so that passengers with suspected or probable COVID-19 infections might be further assessed?

- ☐ Not available
☐ Available
☐ Available and the booths ensure confidentiality and are disinfected after each use

Implementation of Measures Relating to Airport Staff

Q17. Have face shields been made available to security check agents?

- ☐ <10% of staff members
☐ 10-40%
☐ 40-60%
☐ 60-90%
☐ >90%



Survey/Bowtie key tool for gap identification of health safety standards



Identification of weakness in Air Travel protection



Key for dynamic mitigation measures implementation



Leads to safety health promotion



Better passenger confidence in air travel



Return to normal operations

Thanks for your attention

senasa.frt@externomf.es

www.seguridadaerea.gob.es

